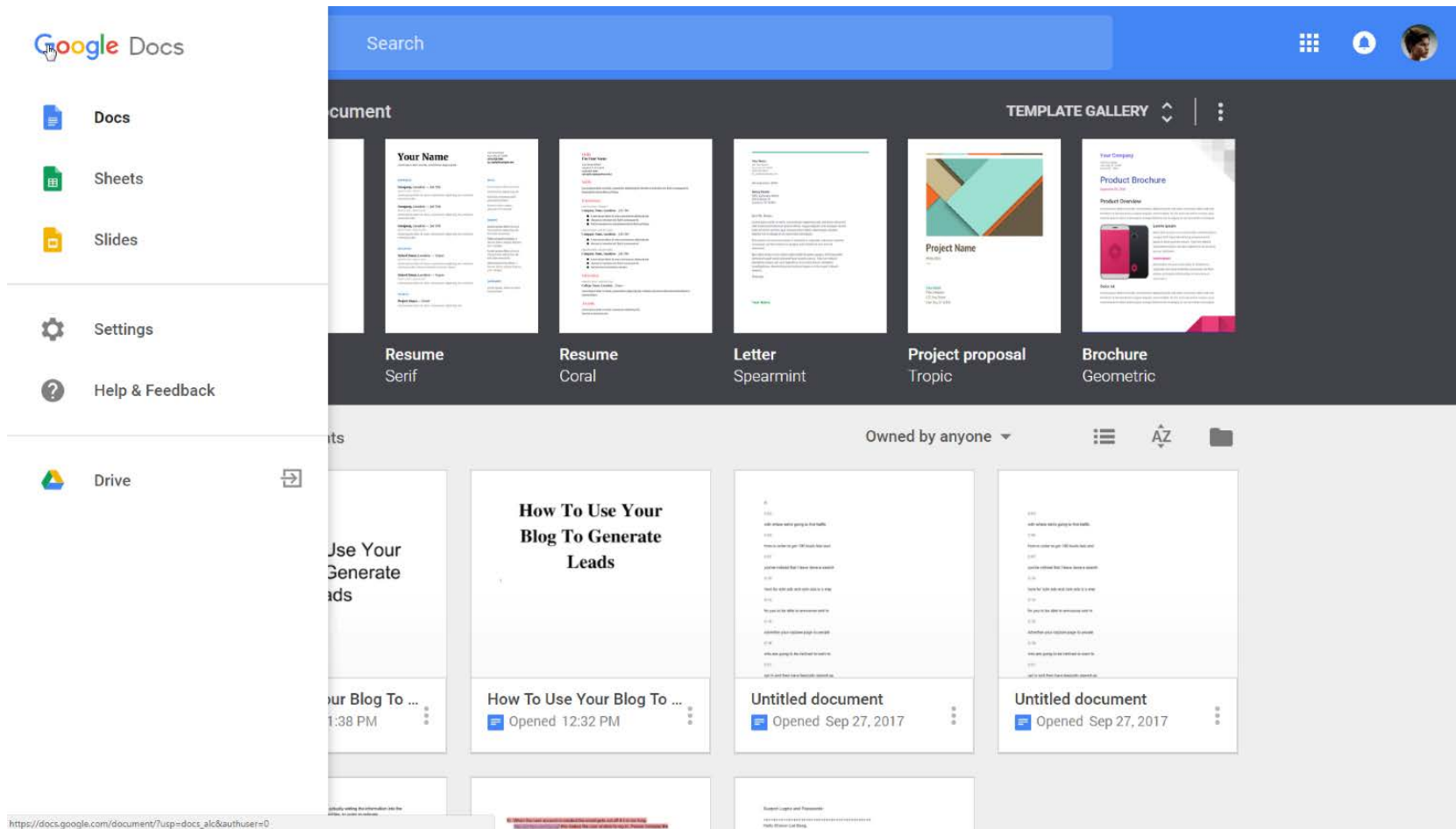
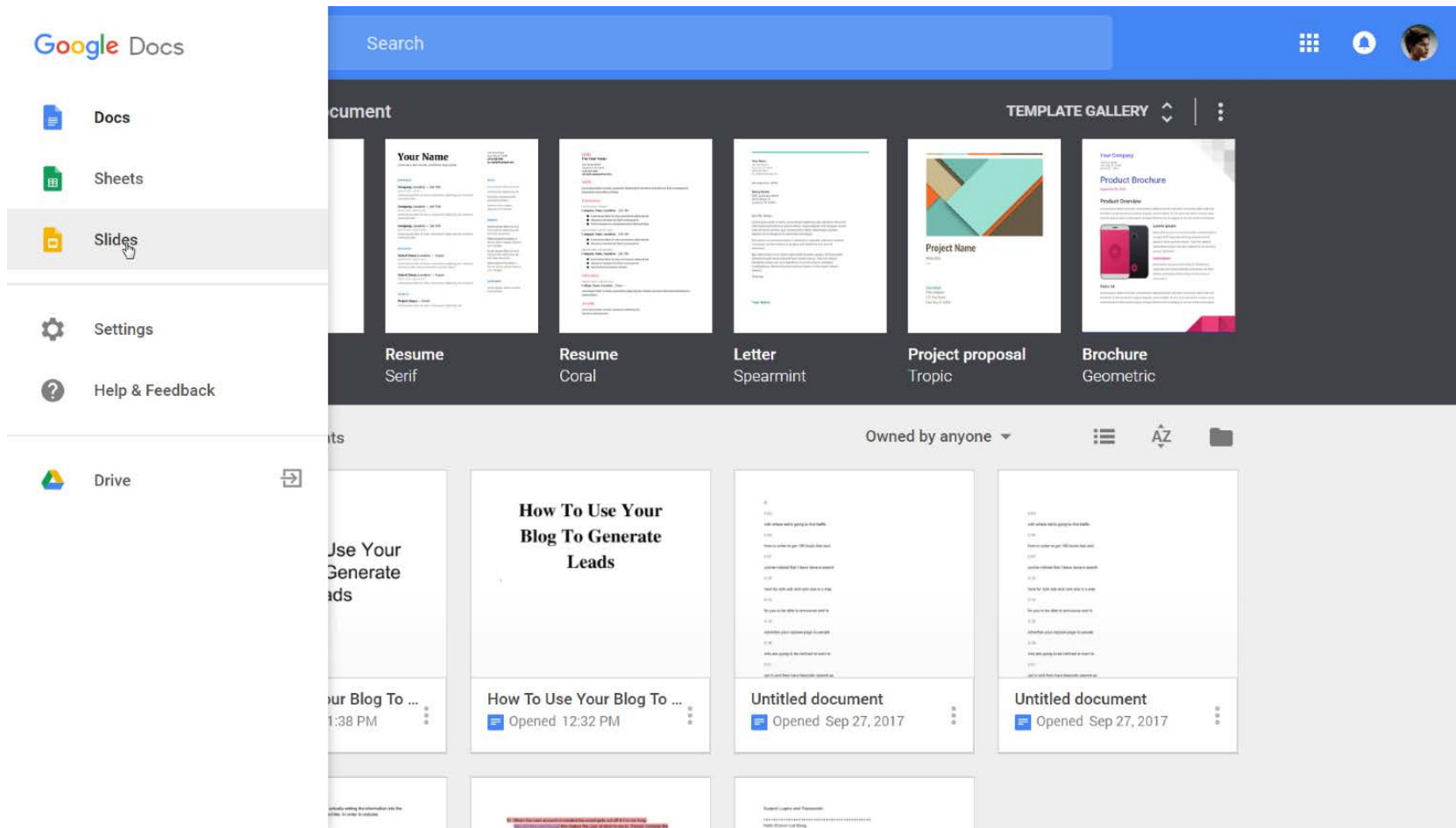


# Presentation Slides

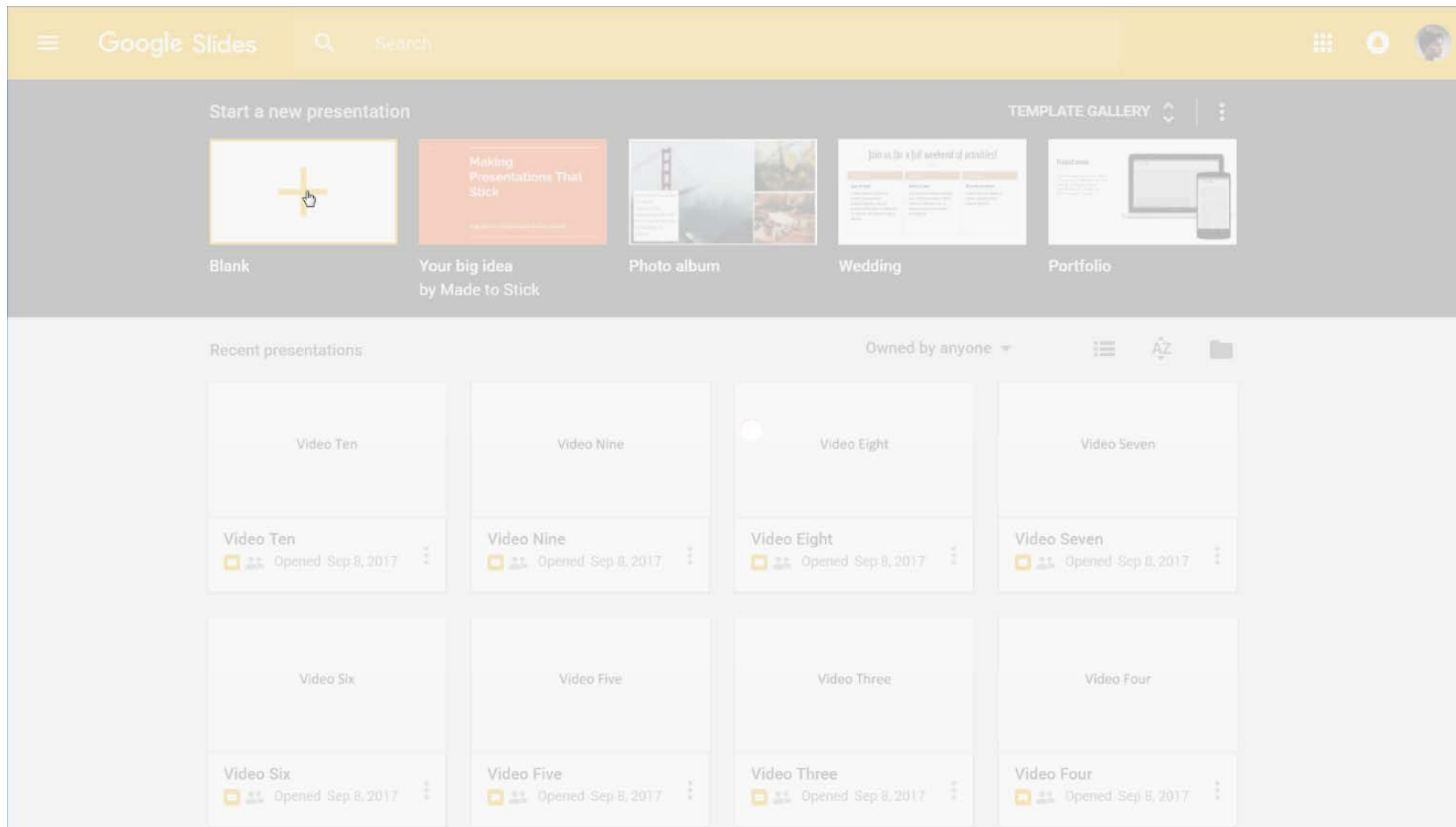
# Go to the Main Menu



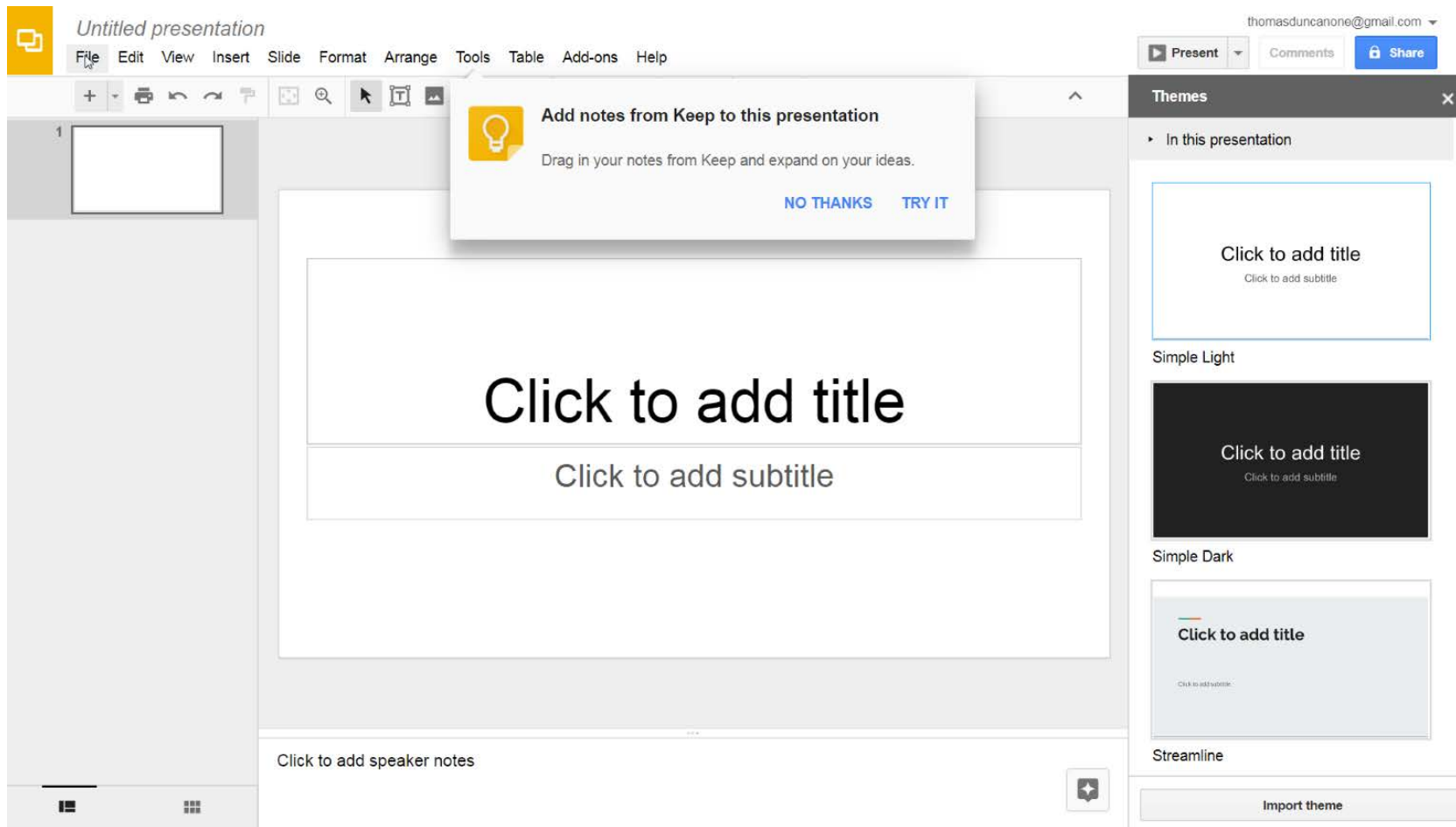
# Click Google Slides



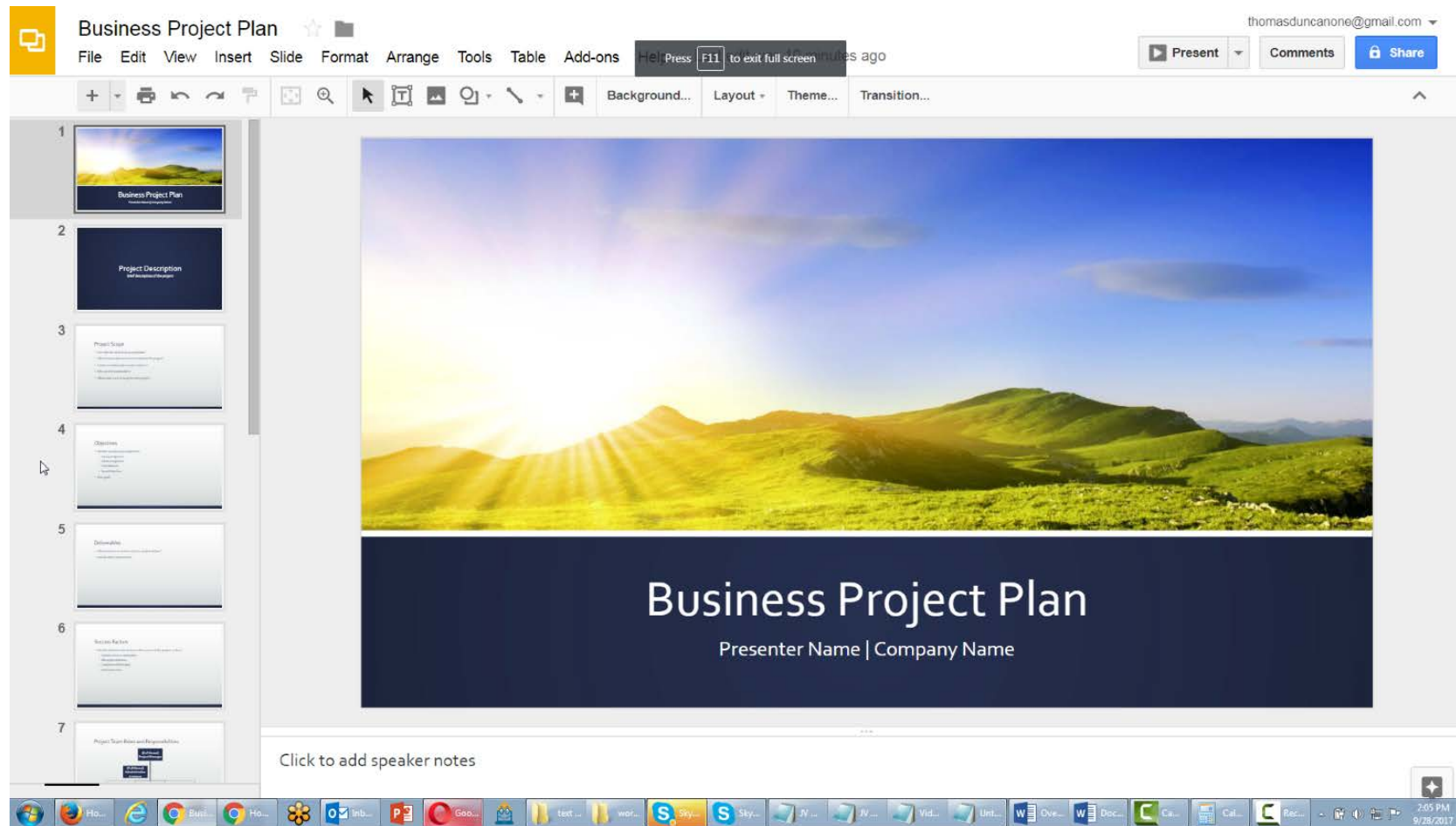
# Click Blank Presentation



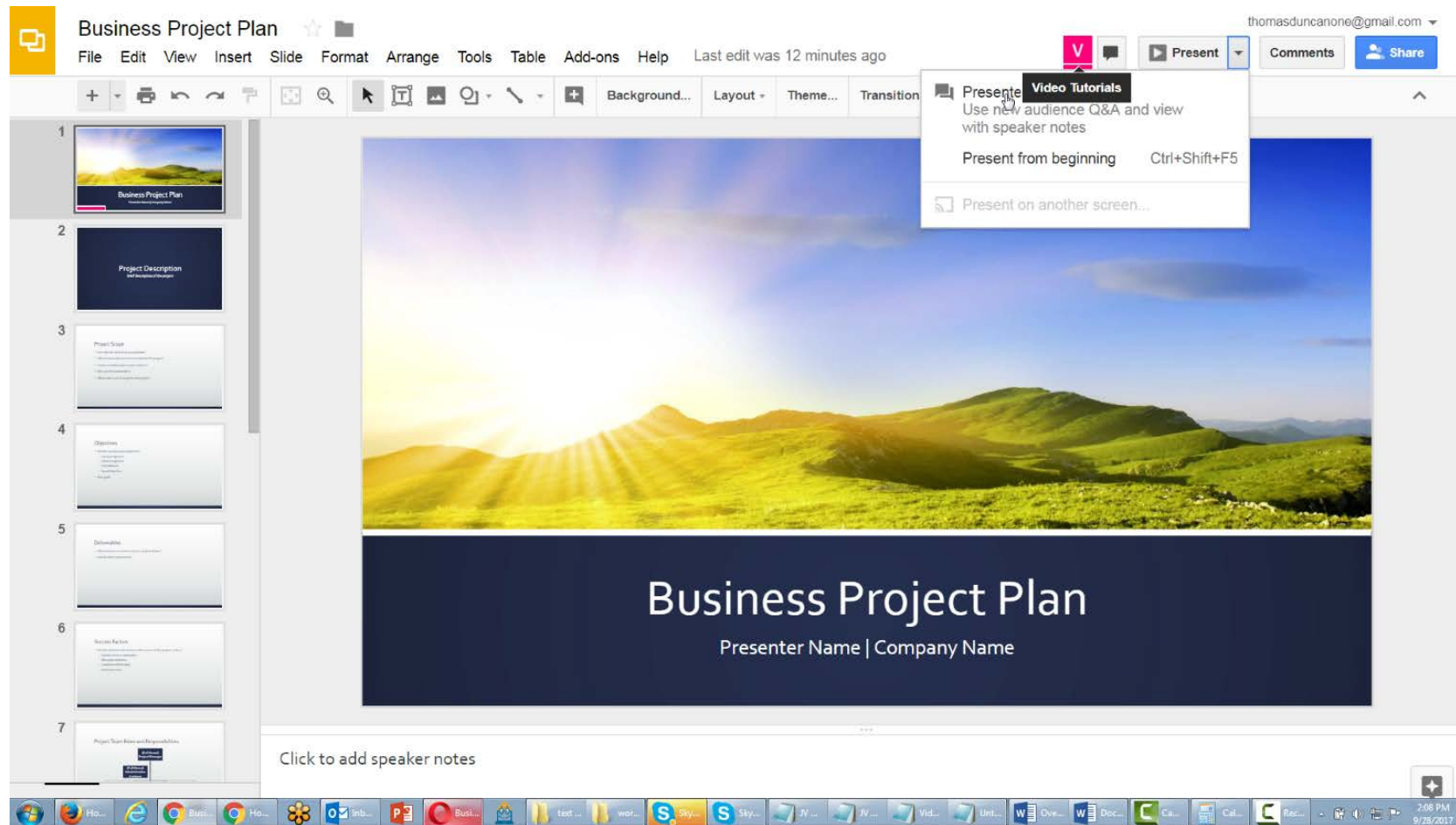
# Use the File Menu



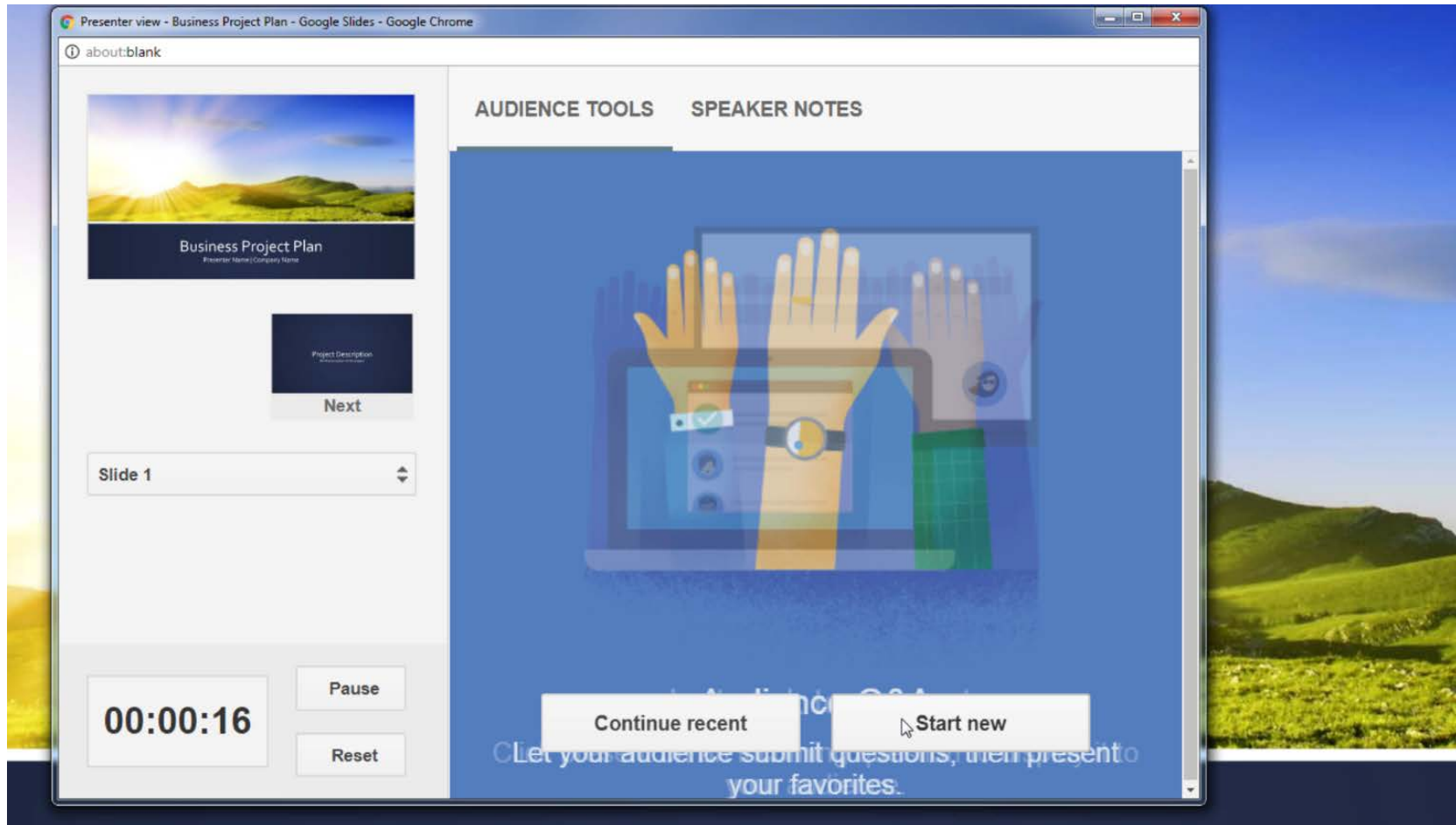
# Open and Import a Power-Point Presentation



# Open the Presenter View With Q&A

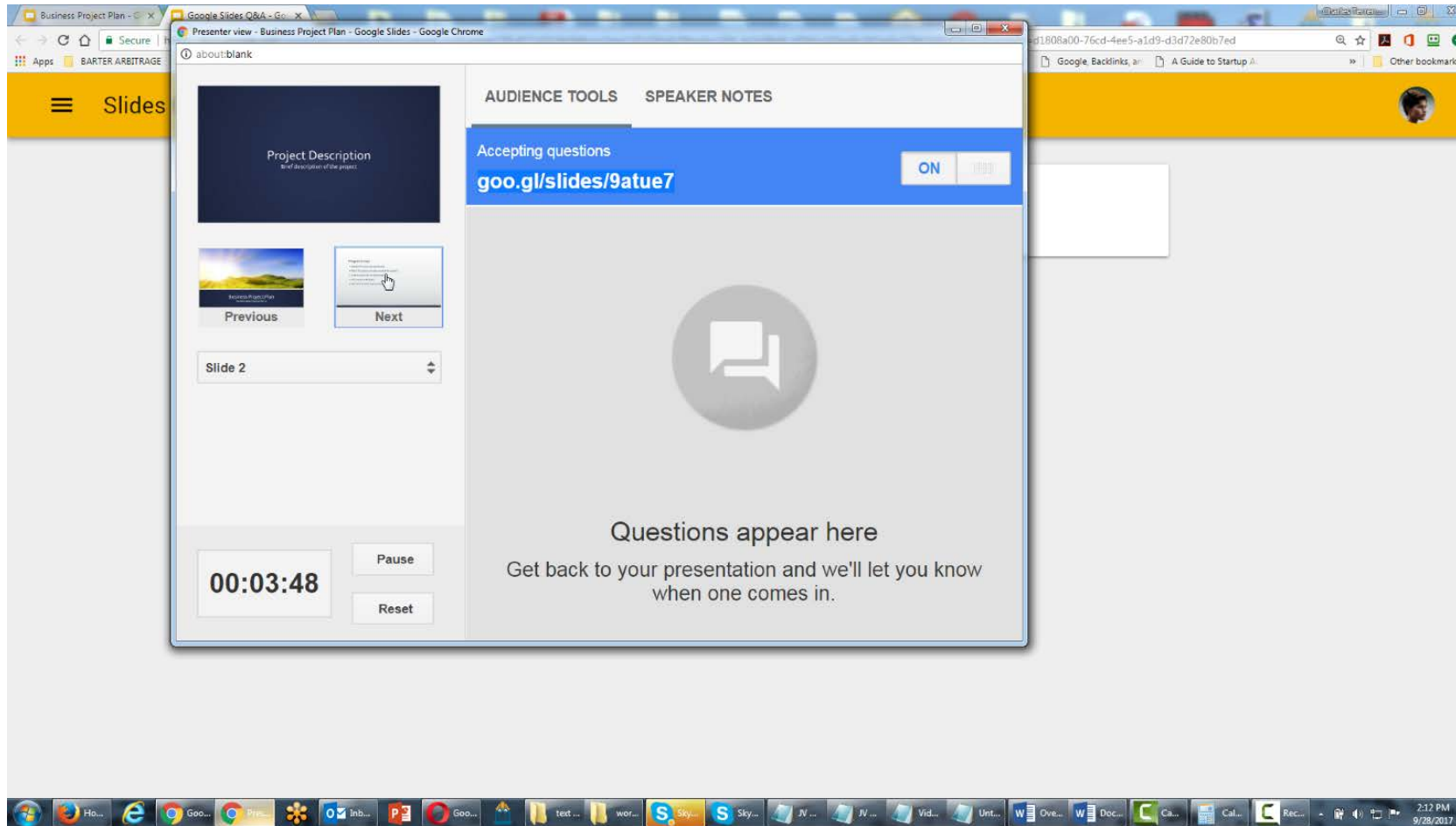


# Click the Start New Button

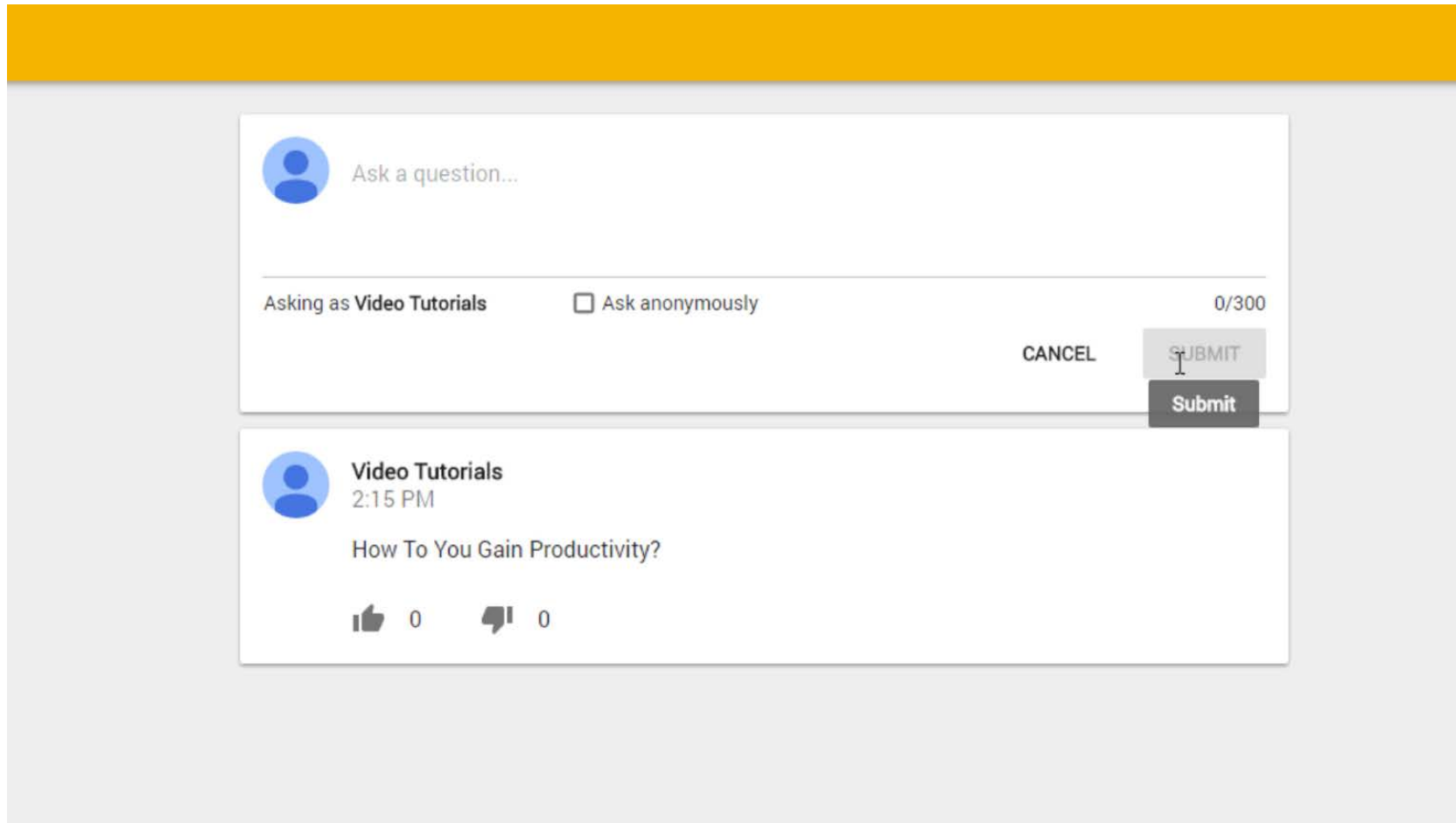




# Display the Q&A URL to Your Audience



# The Audience Can Submit Questions



A screenshot of a user interface for submitting questions. At the top is a solid yellow horizontal bar. Below it is a light gray background containing two white rectangular boxes. The top box is for asking a question. It features a blue circular profile icon on the left, followed by the placeholder text "Ask a question...". Below this is a horizontal line. Under the line, on the left, is the text "Asking as Video Tutorials". In the center is a checkbox labeled "Ask anonymously". On the right is a character count "0/300". At the bottom right of the box are two buttons: a light gray "CANCEL" button and a light gray "SUBMIT" button. A dark gray "Submit" button is positioned directly below the "SUBMIT" button. The bottom box displays a submitted question. It starts with a blue circular profile icon, followed by the name "Video Tutorials" and the time "2:15 PM". Below this is the question text "How To You Gain Productivity?". At the bottom of the box are two icons: a thumbs-up icon followed by the number "0", and a thumbs-down icon followed by the number "0".

Ask a question...

Asking as Video Tutorials ☐ Ask anonymously 0/300

CANCEL SUBMIT

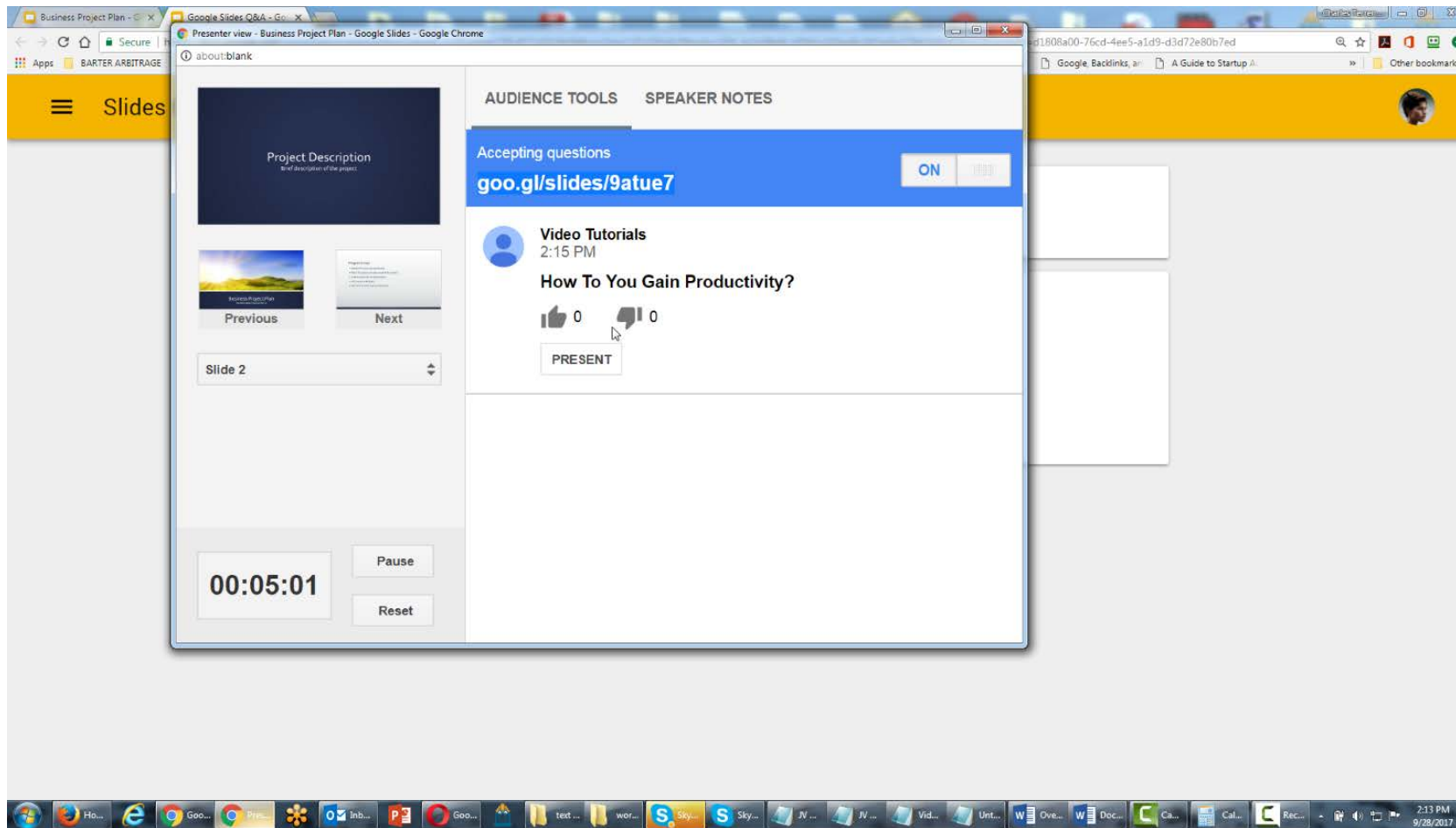
Submit

Video Tutorials  
2:15 PM

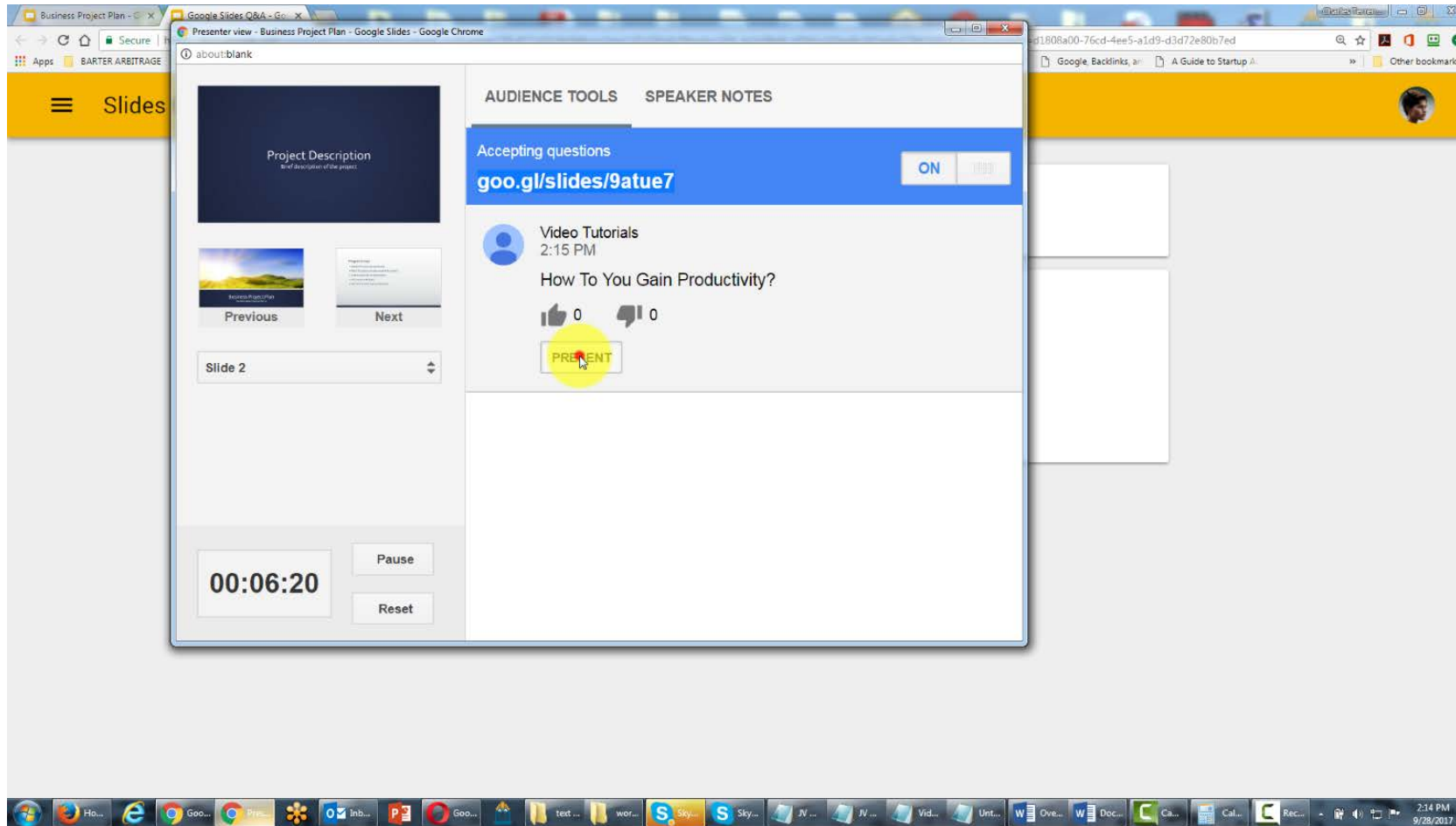
How To You Gain Productivity?

👍 0 👎 0

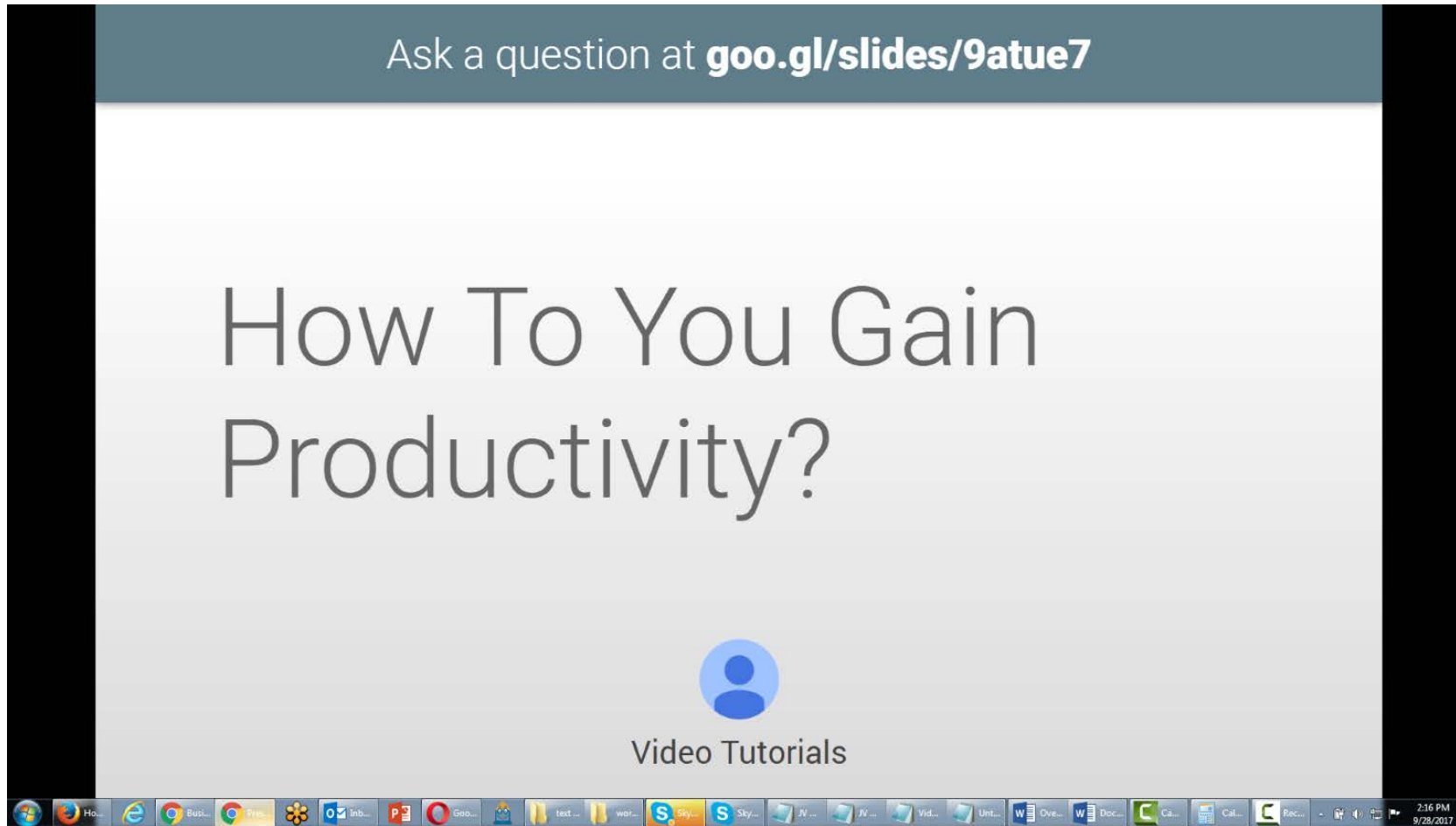
# You'll See the Question on Your Side



# Click the Present Button to Display the Question



# The Audience Will See the Question on Screen When You Present



# Determine When to Toggle Off the Questions

